



Resilient Community  
Partnership  
**Coastal  
Municipalities  
Impervious Surface  
Coverage  
Project Overview**

Kelly Valencik  
Planner, DNREC Delaware  
Coastal Programs  
March 4, 2019

# Delaware Coastal Programs



Delaware Coastal  
Management Program  
(DCMP)



Delaware Natural Estuarine  
Research Reserve  
(DNERR)





Coastal Science & Monitoring



Conservation & Stewardship



Planning & Training



Education & Outreach



# Resilient Community Partnership

## *DNREC Delaware Coastal Programs*

Preparing for Hazards Today - Planning for Risks Tomorrow

GOAL: To help communities undertake the necessary planning to become more *resilient* to coastal hazards



Hurricane Irene - City of New Castle, 2011

*funding for research and planning*

# Steps to Community Resilience



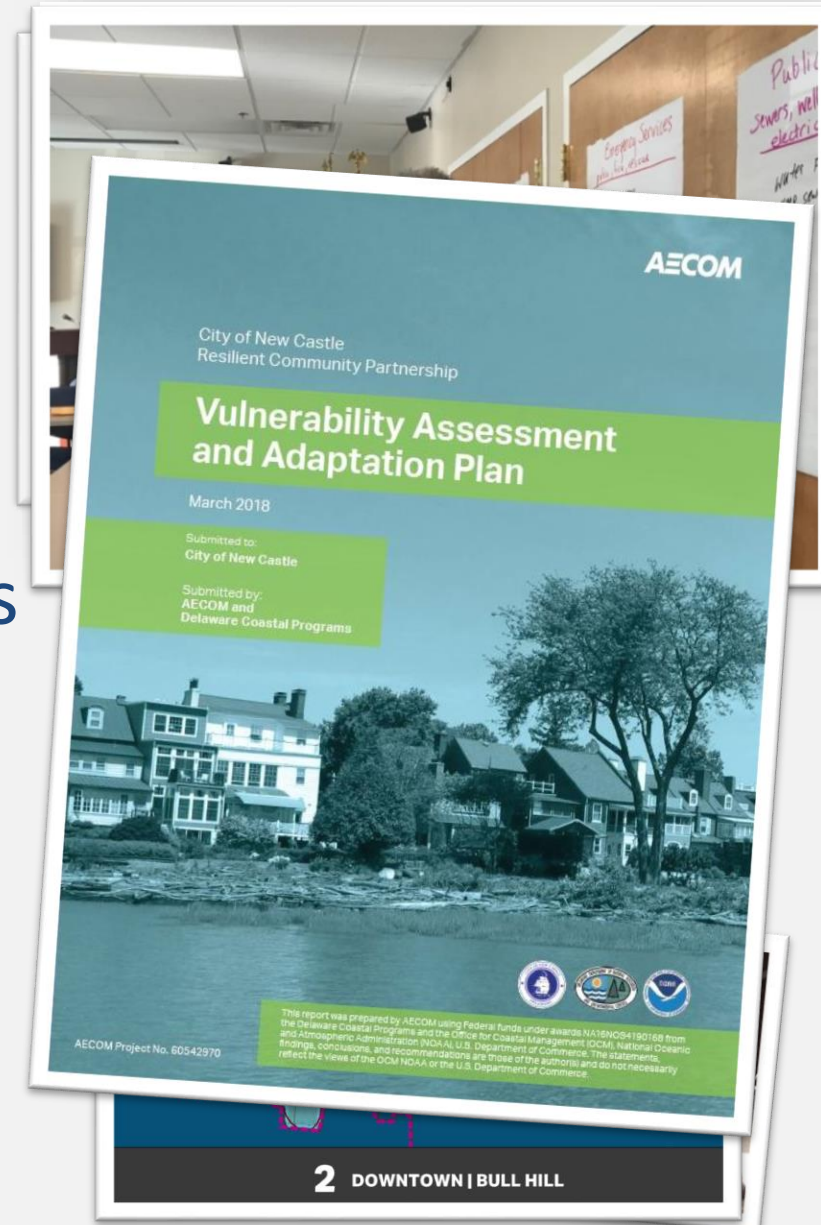
# Town of Slaughter Beach Coastal Vulnerability Assessment and Adaptation Options - 2017

- Inventory Community Values and Assets
- Public Workshop 1: Determine Current Risks/Vulnerabilities
- Public Workshop 2: Future conditions of sea level rise and draft adaptation options
- Finalized assessment and options in Plan
- Implementation of risk adverse practices



# City of New Castle Vulnerability Assessment and Adaptation Plan - 2018

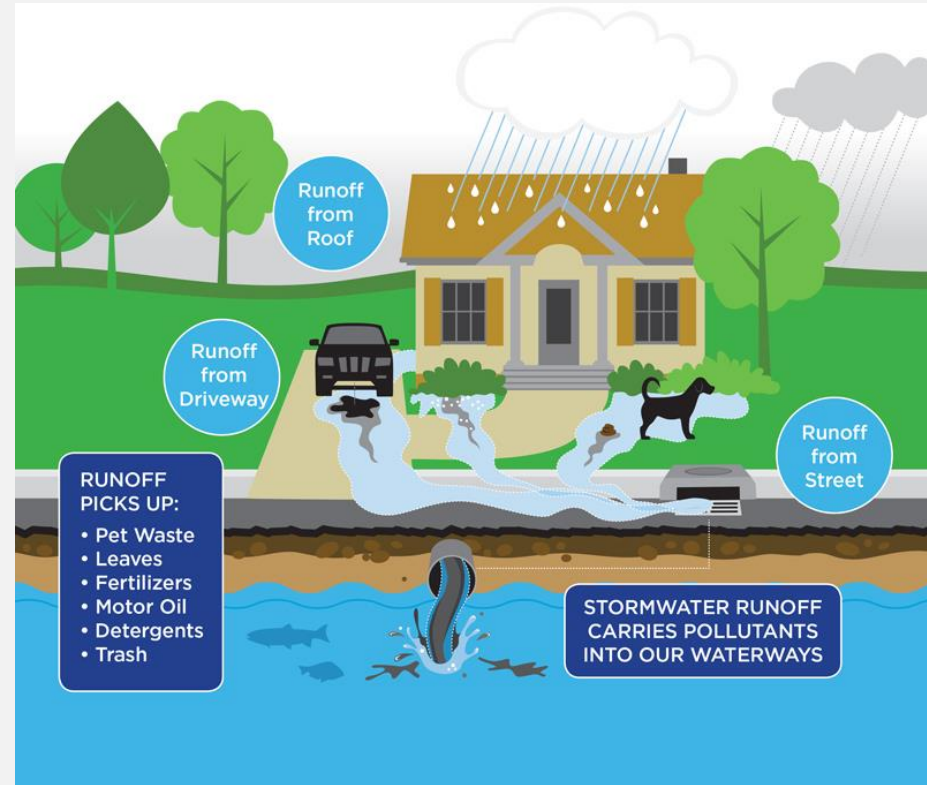
- Formed Task Force to advise on community assets and values
- Researched prior reports and planning documents
- Public Workshops to assess current impacts and share future scenarios
- Finalize Plan with public and task force
- Apply for project funding





# Coastal Municipalities Impervious Surface Coverage Assessment - 2019

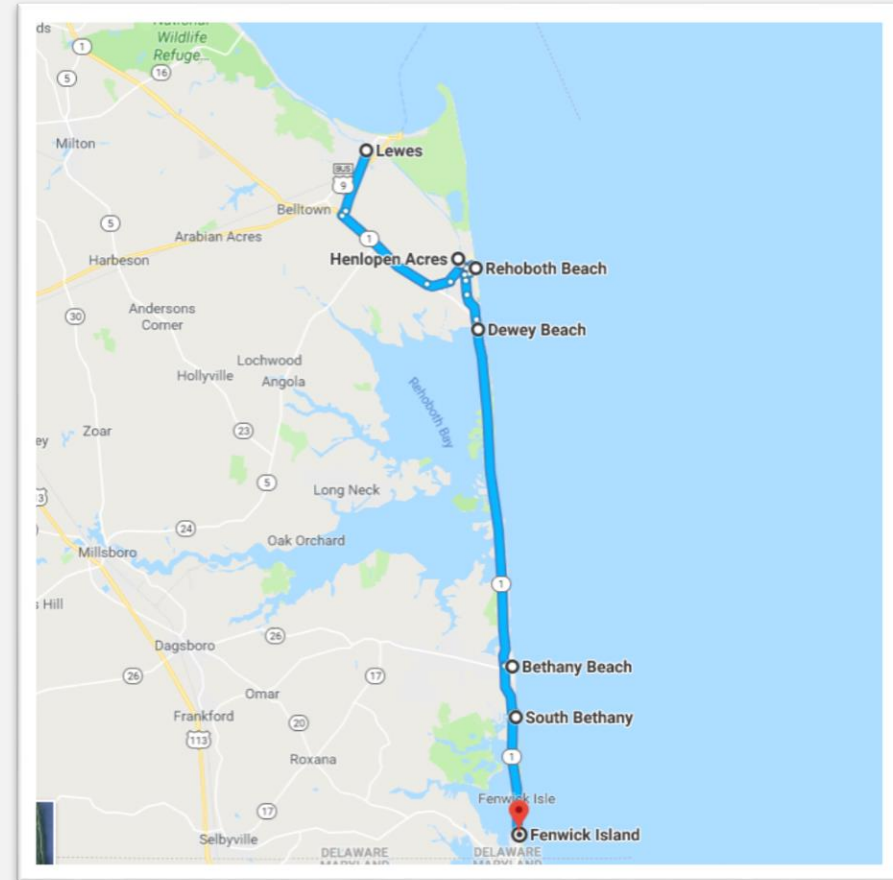
Comprehensive study of impervious surface coverage due to redevelopment in the coastal municipalities and its impacts on stormwater management, flooding, and water quality





**Project includes:**

- City of Lewes
- Town of Henlopen Acres
- City of Rehoboth
- Town of Dewey Beach
- Town of Bethany Beach
- Town of South Bethany
- Town of Fenwick Island



# Done in two parts:

1. Summary of options that will increase stormwater infiltration and reduce future impervious surface coverage
  - Performed by AECOM
2. Development of model ordinances for each municipality to control future impervious surface coverage and final assessment report
  - Performed by KCI

***Estimated completion: September 2019***



# Project Schedule

March – May

- Research and Write Best Practices Report

April

- Collect and Summarize Current Coastal Community Impervious Surface Ordinances Coverage

March - May

- Public Outreach to Identify Community Preferences

June

- Identify Unique Concerns/Challenges in Each Municipality

July

- Develop Draft Model Ordinances for Each Municipality

Aug. – Sept.

- Present Draft Model Ordinances to Each Municipality



GEORGETOWN CLIMATE CENTER  
A Leading Resource for State and Federal Policy

green infrastructure  
toolkit



# Project Bonuses!

- Provides options and practices that will help your municipalities align with potential EPA MS4 Community requirements
- Best practices for impervious surface coverage and stormwater management report and project summaries will be shared a state level
- This report will set your municipalities up for grant applications that help you with finding \$\$\$\$\$\$ for next steps and implementation

# *Questions?*

More information and project reports  
available at:

<http://de.gov/resilientcommunity>

## **Delaware Coastal Programs Team Contacts:**

Kelly Valencik   [kelly.valencik@delaware.gov](mailto:kelly.valencik@delaware.gov)   302-378-5734

Bob Scarborough   [bob.scarborough@delaware.gov](mailto:bob.scarborough@delaware.gov)   302-739-9283